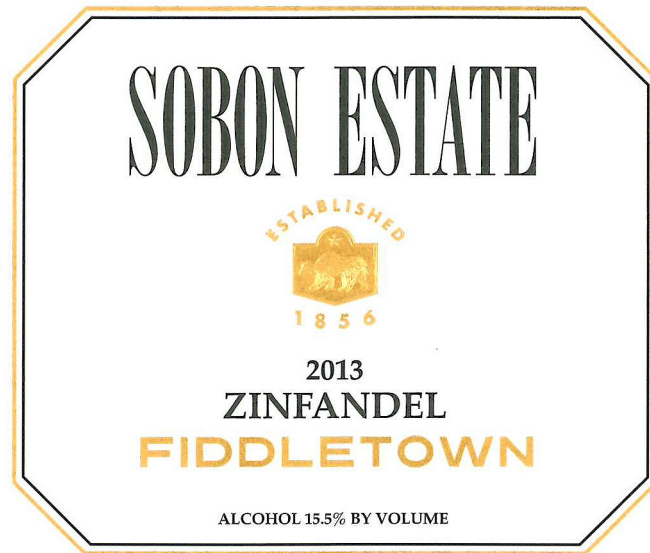
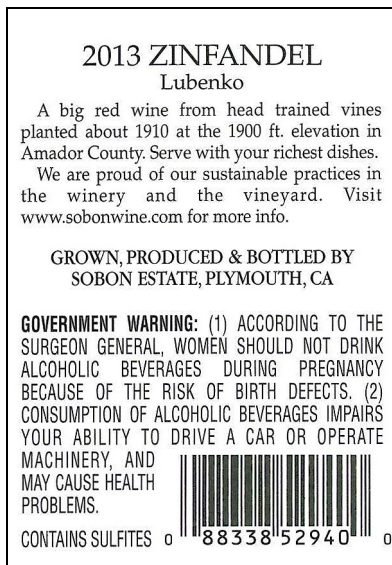

2013 Fiddletown Zinfandel Winemaker Notes



DESCRIPTION From our Lubenko Vineyard, planted on native root stock very early in the 20th century comes this rich, multi-faceted wine. Dark cherry red and full bodied, it shows a purity of fruit and hints of minerality. It is well textured, with a signature brambly component exemplifying its mountain character. The aromas are reminiscent of spring lilacs and fruit compote with hints of sandalwood and subtle vanilla notes. With a warm, lingering, luxuriant finish this offering is best paired with roasted rack of lamb, smoked meats, ripe soft cheeses and szechuan style beef.

FOOD PAIRING Serve with chicken, lamb, beef or pasta dishes.

SPECIFICATIONS 89% Zinfandel, Fiddletown 3% Petite Syrah 8% Primitivo

Aged 14 months in American Oak barrels, 40% new

Total Acid: 6.1 gm/l

Residual Sugar: 0.29%

pH: 3.56

Alcohol: 14.9%

BOTTLED DATE January 15-16, 2015 – 2,521 cases, 750ml

RELEASE DATE February 3, 2015